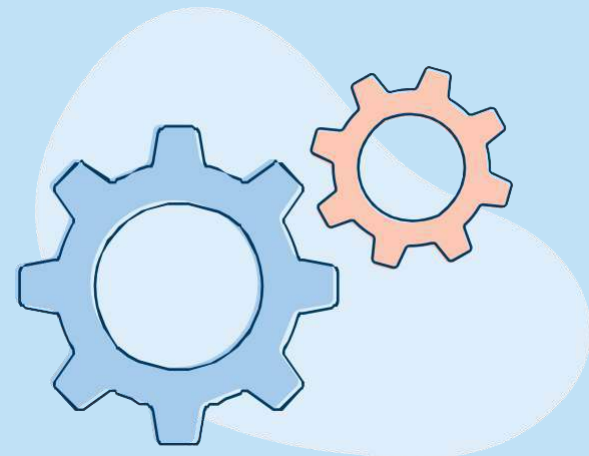


Well360 Clarity



Well360 Clarity Overview

You have access to a variety of tools and resources to manage your health.

Personalized support to help you:

- Make important care decisions and ensure you receive the highest quality of care.
- Manage a health condition.
- Improve lifestyle habits.
- Reduce risk for chronic diseases like diabetes or heart disease.
- Get preventive care.
- Get answers to your health and coverage questions and more.

Visit your member website.



Call the number on the back of your member ID card.

Well360 Clarity Tools and Resources

Well360 Clarity Team

Sharecare

Wellness Coaching

Diabetes Prevention Program

Case Management

Member Website & Plan App



All available
through your
health plan!

Well360 Clarity Team

Your Well360 Clarity team is a team of medical, benefits, and service experts dedicated to helping you with your health plan and finding high-quality care.



The Well360 Clarity team can help you with:

- Finding high-quality specialists who deliver proven results.
- Ensuring your recovery from surgery or other procedures goes smoothly.
- Knowing where to go for care.
- Managing a chronic or complex condition.
- Schedule and prepare for appointments.
- Answering benefit and coverage questions and more.

Call the number on the back of your member ID card to reach your Well360 Clarity team.

Case Management

Nurse case managers can help you navigate your health care journey, make more informed care decisions and more!

A case manager can work with you to:

- Discuss treatment and care options.
- Provide resources available to better manage a condition.
- Prepare for doctor visits so you ask the questions important to you.
- Prepare for a medical test or upcoming surgery.
- Provide advice on seeking medical treatment for sudden onset of symptoms.
- Access available wellness programs, tools and resources.



Call the number on the back of your member ID card to get connected with a case manager.